

Note.  
Standard nut M4 = 10 pcs.  
Lock washer M4 = 10 pcs  
put it in a separate zip bag in the package

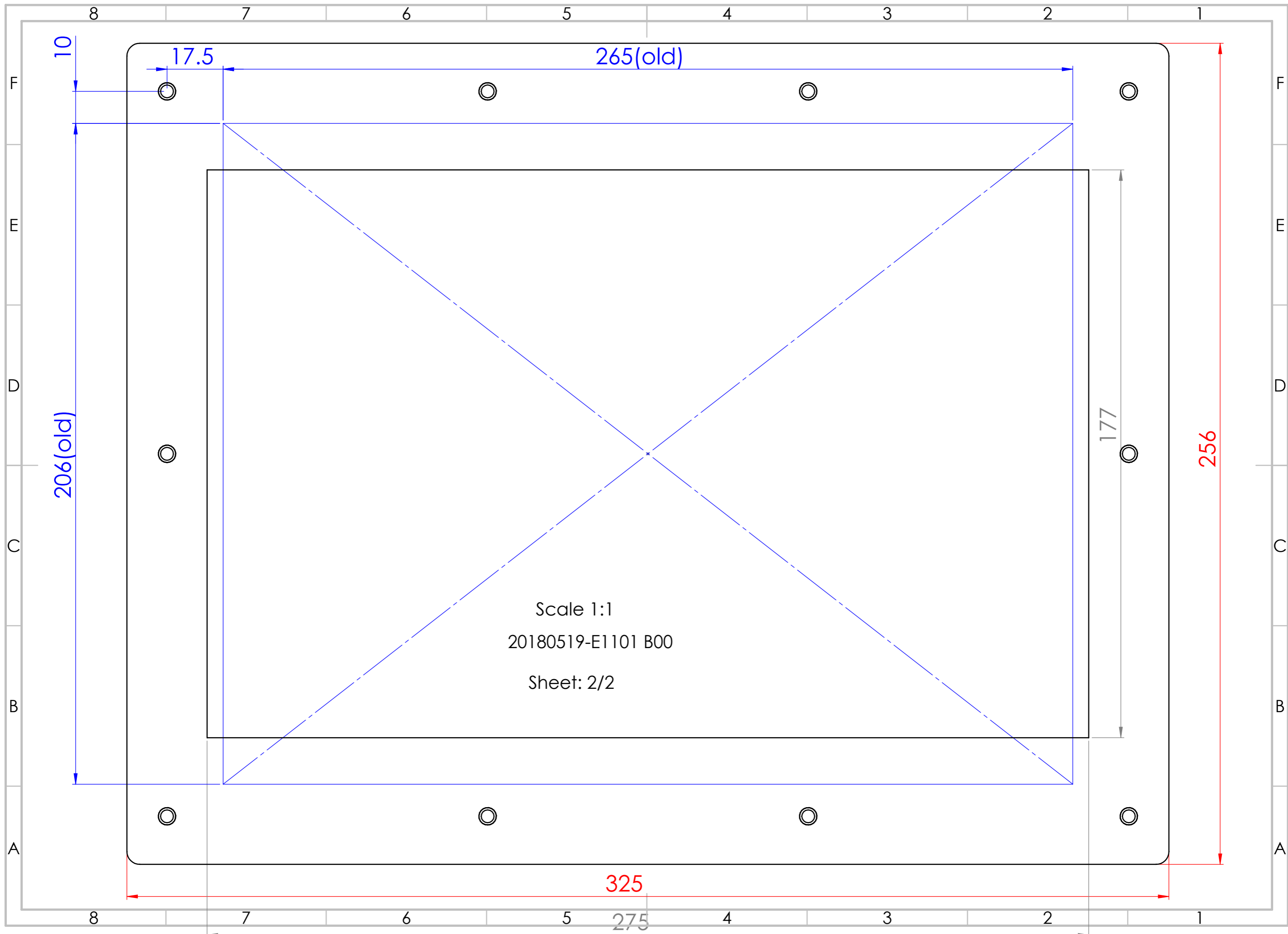


Scale 1:1  
Please see page. 2/2

ITEM NO.	PART NUMBER	DESCRIPTION	QTY.
1	From-E1101	EG=2.0 mm.	1
2	Gasket-E1101	T=2.0 mm.	1
3	PEM FH-M4-12 X--N	-	10
4	170000030	Nut	10
5	1721480160	Lock Washer M4	10
6	2200000504	Powder paint interpon 610 silver fine texture	0.01

Sheet: 1/2  
All dimensions are in millimeter.

MATERIAL: - SURFACE TREATMENT: CUSTOMER: <b>Beijer</b> CUSTOMER/NO.: DESCRIPTION: <b>Adaptor plate from T100/E1101 to X2 pro10</b> GPV ITEM NO.: <b>20180519-E1101</b>		THIS DRAWING REMAINS THE EXCLUSIVE PROPERTY OF THE GPV GROUP. IT SHALL NOT BE COPIED, REPRODUCED, DISCLOSED IN PART OR IN WHOLE, OR OTHERWISE MADE AVAILABLE TO THIRD PARTY WITHOUT OUR PREVIOUS WRITTEN CONSENT. Surface: mm <sup>2</sup> Weight: g. SCALE: 1:2 <b>A3</b> CHECKED QCC DATE:
DATE RELEASED: 21/05/2018 SIGN: SPW	PROJECT NO.: N:\Mechanics\FPD\Customers\Beijer Electronics\1\mgp\0mg.GPV\20180519-XXXX\20180519-E1101\	



Scale 1:1  
20180519-E1101 B00  
Sheet: 2/2